

# MONTHLY MEMBERSHIP PROGRESS REPORT

LOCATION HUNGARY

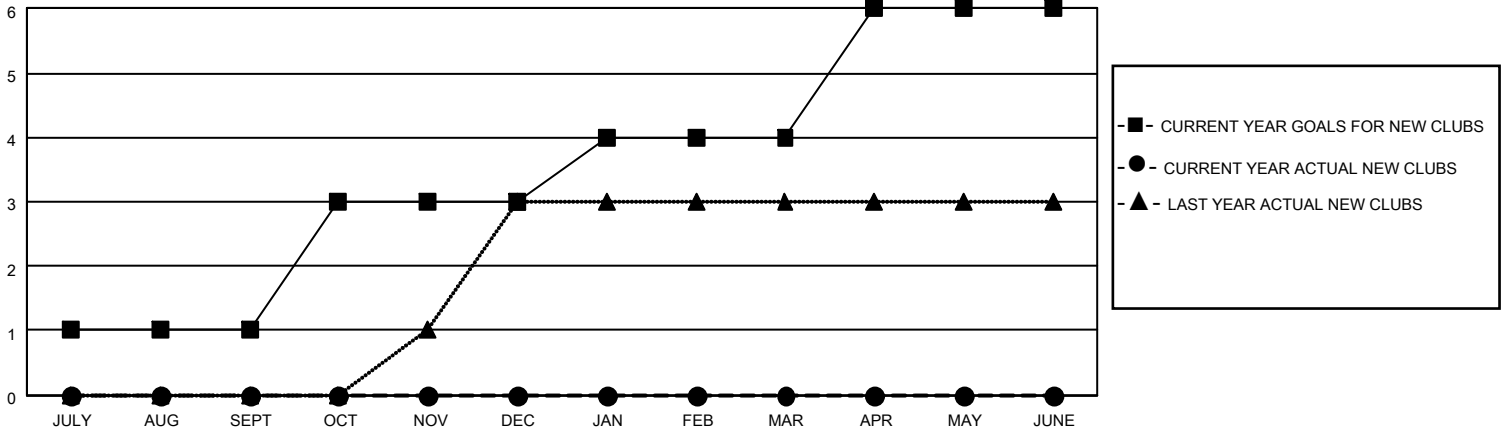
District 119

Results as of: 6/30/2022

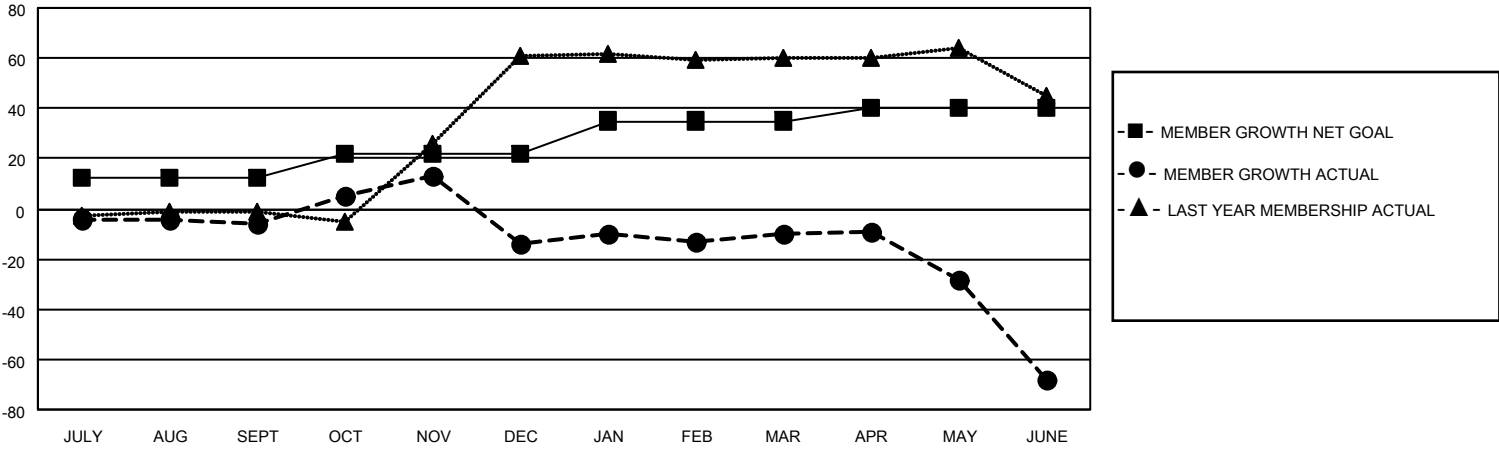
Clubs			
RESULTS FOR 2021-2022			
QUARTER	NEW CLUB GOAL	NEW CLUBS	DROPPED CLUBS
JULY/AUG/SEPT	1	0	0
OCT/NOV/DEC	2	0	1
JAN/FEB/MAR	1	0	0
APR/MAY/JUNE	2	0	2

Members			
RESULTS FOR 2021-2022			
QUARTER	MEMBER GROWTH NET GOAL	MEMBER GROWTH ACTUAL	DROPPED MEMBERS ACTUAL (including transfers)
JULY/AUG/SEPT	12	6	10
OCT/NOV/DEC	10	26	34
JAN/FEB/MAR	13	14	9
APR/MAY/JUNE	5	21	77

**GOALS AND ACTUAL NEW CLUBS CUMULATIVE**



**GOALS AND ACTUAL MEMBERS CUMULATIVE**



**DROPPED CLUBS: 3**

25 CLUBS OF 44 ADDED 1 OR MORE NEW MEMBERS

**GENDER DISTRIBUTION**

MALE	500 (58.07%)
FEMALE	361 (41.93%)
NON BINARY	0 (0.00%)
PREFER NOT TO ANSWER	0 (0.00%)

**DROPPED MEMBERS**

[CLICK HERE FOR CUMULATIVE MEMBERSHIP DATA](#)

DECEASED	5
CLUB CANCELLED	39
OTHER	86
<b>TOTAL</b>	<b>130</b>

TOTAL FAMILY UNIT MEMBERS	171
FAMILY MEMBERS PAYING HALF DUES	87